
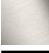






36 210 361



- Drehumstellung
 - Rosette Ø 60 mm
 - Porzellanplättchen NEUTRAL
- Passt zu MADISON**

Passt zu MADISON

	Chrom	36 210 361-00
	Platin gebürstet	36 210 361-06
	Platin	36 210 361-08
	Messing (23kt Gold)	36 210 361-09
	Messing gebürstet (23kt Gold)	36 210 361-28
	Dark Platinum gebürstet	36 210 361-99

Benötigtes Zubehör



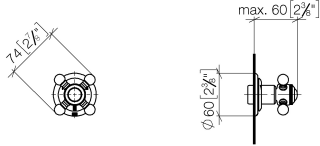
UP-Dreiwege-Umstellung -

35 203 970 90

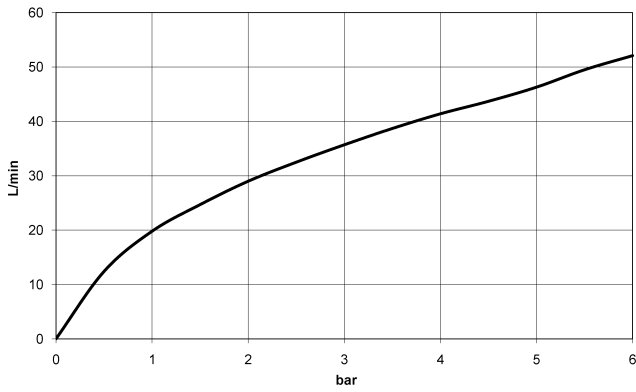
- Max. Einbautiefe 155 mm
- Min. Einbautiefe 85 mm

36 210 361

mm [inches]



Durchflussdiagramm



Codes & Standards

DIN 4109

ISO 3822

Scottish Water
Byelaws

UK Water Supply
Regulations

Ü-Zeichen



MADISON UP-Dreiwege-Umstellung - Chrom

MADISON

36 210 361

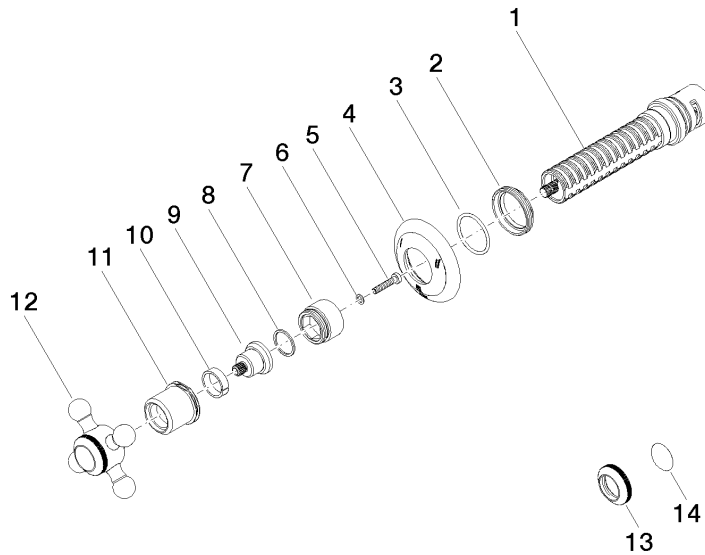
Zertifikate

WRAS_2307

LGA_38

36 210 361

Produktversion ab 4/1/2022





MADISON UP-Dreiwege-Umstellung - Chrom

MADISON

36 210 361

Ersatzteilstückliste

Produktversion ab 4/1/2022

Nr.	Artikelnummer	Benennung	Verbaumenge	Lieferzeit
	90 90 03 303 10 90	Umstellung -	14	2