

/ Discover Kermi /

KERMI



# New products 2021

I like it cosy. Kermi.

# / Discover Kermi /

In 2021 as well, Kermi is showing how quality, performance, and diversity can be improved in the context of new challenges. Discover Kermi innovations! Experience top levels of efficiency for team players, pure aesthetics for design lovers, and smart know-how for technology enthusiasts.



The Kermi system x-optimised has the formula for optimal thermal comfort: the perfect combination of generating, storing, controlling, and transferring heat and controlled ventilation. Here, we rely on the use of renewable energies and the intelligent combination of water and electricity-based system components. The “+e” suffix stands for expansion with intelligent electrical solutions. Kermi offers the complete range for holistic, energy-efficient solutions.

Discover the latest innovations in 2021: with new models and components for a Plus in possibilities, energy efficiency, and comfortable warmth.

## Comfortable warm and refreshingly efficient

The **x-flair heat pump radiator** combines original x2-technology with an integrated, fully automatic axial fan system. A ready-to-plug-in radiator for new-builds and renovations while being the best partner for heat sources with low flow temperatures.



/ Discover Kermi /

## For team players



## Most efficient air/water heat pump for outdoor installation

The **x-change dynamic pro air/water heat pump** scores well with the best efficiency, lowest sound emissions, as well as newest control technology. Installation effort is reduced to a minimum and a new, small output variable for energy-efficient new-builds is an optimal addition as it requires less energy.

## Timeless design, contemporary technology with all-electric operation

Flat, design language with soft transitions or clear contours and strictly reduced lines, the Pateo-E (pictured back) and the Rubeo-E will impress you not only with their looks. With their all-electric operation, they distribute heat in all rooms – independently of the central heating network.

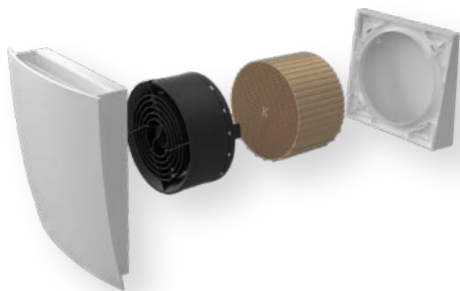
A close-up, high-resolution photograph of a human eye, looking directly at the viewer. The eye is light-colored with dark, well-defined eyelashes. The image is partially obscured by the text 'For design lovers' and is set against a vibrant green background.

# For design lovers

## Proven technology at its most beautiful



Classy at first glance. The **Leveo** design steel panel radiator makes a good impression right from the start with its firmly bonded, rounded design front. When in operation, the innovative therm-x2 technology delivers reduced energy consumption and improved comfort. The preset valve is installed on left or right ex works. Connection at the bottom in the centre or on the valve side is possible.



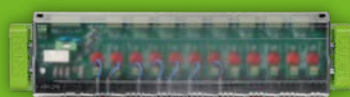
## Thinking ahead about room air

The new **x-well D13 pendulum fan** is impressive with its high level of efficiency with heat recovery of 87 %, how easy it is to install, and its small installation dimension of 20 cm. It only needs a 230 V connection, cabling between the fans is not required.

The new **x-well hygienic air filter** for central ventilation systems is ideal for people with allergies or for areas with a high level of fine dust pollution. It ensures that there is virtually dust-free and pollen-free supply air. The washable filter element means that no expensive replacement filters need to be bought.



## For technology enthusiasts



## Everything sorted with a single click

The **x-net ready line plus / x-net ready line EGO plus** control units create space for cable feed, save valuable time on the construction site, and because they are already wired to the terminal strip, can be installed with a single click. It can be connected up in the new **Comfort XL manifold cabinet** with a magnetic seal shortly before initial operation, which reduces the risk of theft to a minimum. With x-net EG, hydraulic balancing is completed in a flash as well. The optical function indicator in the terminal strip as well as open and closed loop control actuators, allow a seamless function check resulting in the work being handed over and invoiced early on.







You can find out about **all our innovations** and our complete Kermi product range for heating and ventilation technology at **[www.kermi.de/discover](http://www.kermi.de/discover)**



**Raumklima | Duschdesign**

Kermi GmbH  
Pankofen-Bahnhof 1  
94447 Plattling  
GERMANY

Tel. +49 9931 501-0  
Fax +49 9931 3075  
[www.kermi.com](http://www.kermi.com)  
[info@kermi.com](mailto:info@kermi.com)