

Technical Data

KLUDI PROVITA
basin mixer
DN 15

Ref.:
333300500

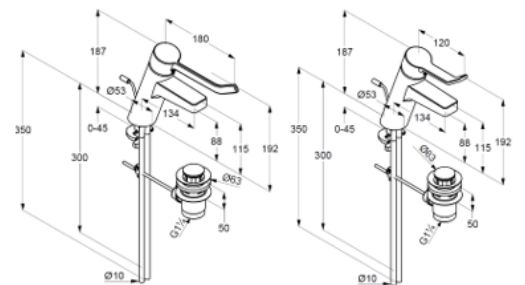
Finishes:
05 chrome

Product description
Manufacturer KLUDI GmbH & Co. KG
Typ: KLUDI PROVITA
basin mixer DN 15
Ref.: 333300500
single lever mixer
single hole mounted
without lever
(solid public lever, metal 7493005-00)
(solid clinic lever, metal 7491005-00)
Aerator M24 PCA, laminar
ceramic cartridge with hotwater safety device
flow rate at 3 bar = 7,6 l/ min.
fixed spout
copper hoses Ø 10 mm
rapid installation set
pop up waste 1 1/4" metal

Product picture



Dimensional drawing



7491005-00

7493005-00

Flow rate diagram

